

THE BEAUTY OF DECKING

AT EVERY LEVEL



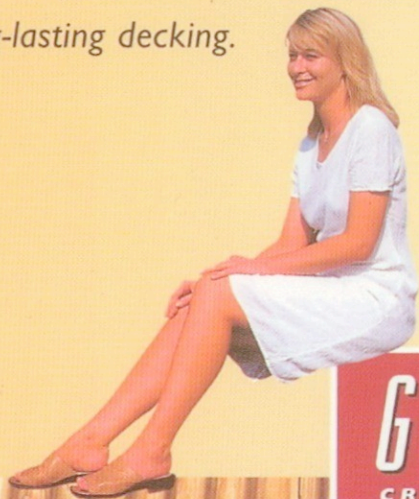
GLEN DECK
CREATIVE DECKING

THE BEAUTY OF DECKING . . .



Strength, endurance and attractiveness are the qualities that make Irish timber the natural choice for GLENDECK.

Using state of the art technology in harmony with traditional craftsmanship, Glennon Bros. transform specially treated Irish timber into beautiful and long-lasting decking.



GLENDECK
CREATIVE DECKING



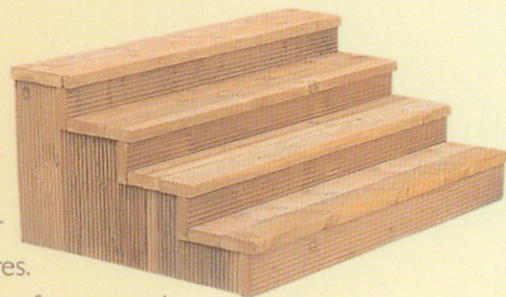
Limitless in its potential, Glendeck can be used to create an amazing variety of outdoor living space, including patios, pathways, garden steps, work areas and play areas. A guaranteed Irish product made from renewable resources, (more trees are planted than harvested annually), Glendeck blends in beautifully with any environment. A special treatment process protects it from the harshness of Irish weather, and provides a clean and comfortable outside living area all year round.

Glendeck greatly increases the use, pleasure and satisfaction you get from your home, allowing your family to enjoy more outdoor activities. Glendeck provides the perfect setting for outdoor eating and barbecues, and it's the one extension to your home that won't disrupt life in the household while being installed.



... AT EVERY LEVEL

For gardeners, Glendeck creates a marvellous opportunity to add a totally new dimension to their favourite pastime. Not only does decking enhance your garden, it is also extremely practical. Glendeck provides a subtle backdrop for all types of garden containers and garden sculptures. And of course, decking provides an excellent facility for you and your family to relax and enjoy the garden, all year round.



Clean, safe and comfortable, Glendeck provides an excellent outdoor play area for children of all ages, allowing them to enjoy all the benefits of being outside no matter what the weather.

All in all, Glendeck offers a wonderful opportunity to bring a new dimension to your home. And with Glendeck you know you're getting the best quality timber and the finest craftsmanship available in Ireland. Install Glendeck in your home **now** and we guarantee years of pleasure in your room outside.



THE BEAUTY OF DECKING AT EVERY LEVEL

There is something almost irresistible about a deck. Those clean lines seem to draw you outside and into refreshingly new surroundings. It's a chance to put aside the day's cares and let yourself relax. Few home improvements can match Glendeck for usefulness, beauty and enhanced value to a home. Before laying your Glendeck, it is vitally important that you read the following sections.

THE LAYING PROCESS

It is not possible to overstate the importance of using the safest construction methods possible.

- 1 Clear the working area, making sure that the ground slopes away from the deck/house. A slope of 10mm per metre, is enough to prevent the accumulation of standing water.
- 2 Cover the working area with black polythene and spread bark/gravel over the sheet.
- 3 Place lengths of treated timber e.g. 4x2 or 4x3, on the ground. The number of pieces required will vary according to the width of the deck. Make sure the slope is correct.
- 4 Leave a space of 4mm between the boards to allow moisture to pass through and to speed the drying of the surface.
- 5 Use brass screws or galvanised ringshank nails to secure the decking to the supports.
- 6 Pre-drilling the nail holes can reduce the chances of splitting the timber.
- 7 All cuts in the timber must be treated immediately with ENDCOAT® according to manufacturers instructions.

If you wish to construct a raised deck, or create a structure adjoining the home, we recommend that you contact a qualified engineer or architect.

© ENDCOAT IS A REGISTERED TRADEMARK OF
OSMOSE WOOD PRESERVING Inc.



CLEANING AND MAINTENANCE

To give your deck a longer life, follow these maintenance procedures.

- 1 Sweep the deck frequently; hose it down when dirt accumulates.
- 2 Clean the space between the deck boards in the Autumn when the leaves have fallen, and in the Spring before the busy season. Use a stiff wire or a putty knife.
- 3 Remove mildew promptly. It can appear as dirt-like spots, but grows into larger black or brown stains. Use a mildewcide annually or more often on shaded areas.
- 4 If your deck becomes damaged, or you need to replace a part of it, make sure it's replaced with Glendeck, and treat freshly cut ends with ENDCOAT®.
- 5 Should you wish to refresh or change the colour of your deck, simply apply wood stains as per manufacturers instructions.

Osmose

The durable choice for all garden timber projects

All Glendeck timber is preserved using an Osmose Naturewood preservative system which is a modern system based on copper and an organic co-biocide (Alkaline Cooper Quaternary). Alkaline Cooper Quaternary systems have provided proven performance for almost a decade in locations throughout Europe, North America, Australia and Japan.

Non-observance of these instructions will invalidate any liability in our conditions of sale. Any defect in the product should be notified to the supplier before the deck is constructed. In the event of a proven manufacturing defect, the Company's or Seller's total liability shall under no circumstances exceed the price of the defective timber. The Company or Seller shall not in any way be responsible for additional consequential costs or losses.

GLENDECK
CREATIVE DECKING

GLENNON BROS. TIMBER LTD.

The Sawmills, Dublin Road, Longford, Ireland. Tel: (043) 46223. (Int+353 43 46223). Fax: (043) 46262.

Glendeck Accessories



Longford PAO Spindles



1.2m Turned Newel Post



Glendeck



1.5 Turned Newel Post



Fermoy Moulded Spindles



Moulded & Rebated Handrail



2.4 PAO Baserail



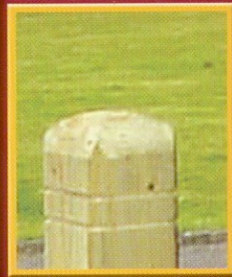
Glendeck



The Shroid Spindle



2.4 PAR Round-Top Post



Glendeck



GLENNON BROS. TIMBER LTD.



• Longford: Tel (043) 50800 Fax 043 50806

• Fermoy: Tel (025) 37400 Fax (025) 37457

SALES REPS:

Aidan Curran
R.O.I. & U.K. Market
(086) 2569181

Michael Minchin
R.O.I. Market
(086) 8115927

Padraig Murphy
R.O.I. & N.I. Market
(086) 2526741

• e-mail: info@gbt.ie

• web address: www.gbt.ie